

13601 LG cable

ADVANTAGE AIR[®]

**LG cable
MyAir2 and Zone10.4 compatible**

2013

INSTALL INSTRUCTIONS

31 Jan 2013
Revision 2.0

1. Turn off the power to the air conditioner
2. Connect one end of the Advantage Air unit control cable to the MyAir2 CB or Zone10.4CB:

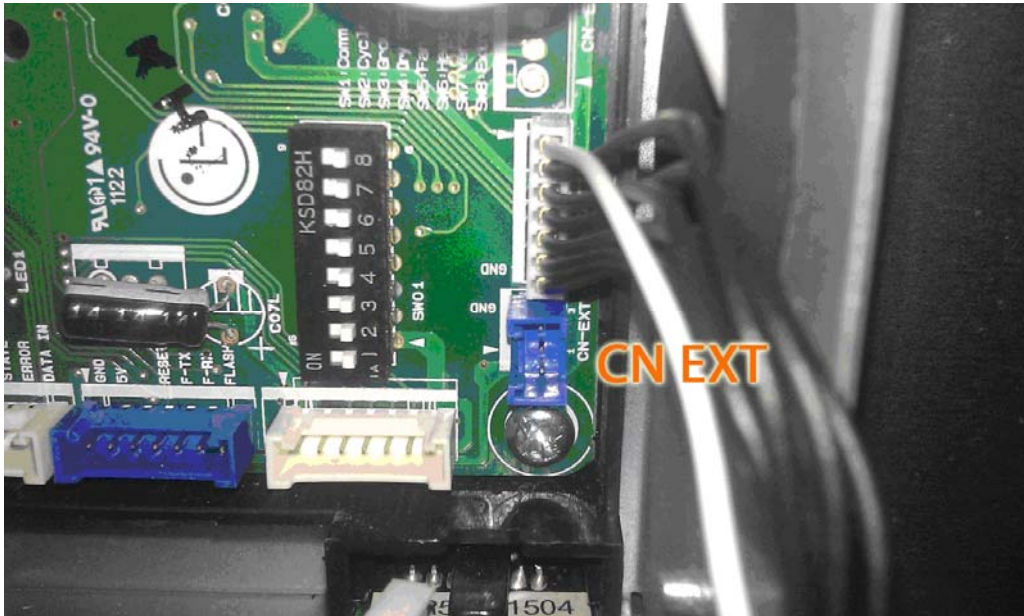


3. Connect CN-CC and CN EXT to the indoor fan coil unit. (connector shown in photo below).

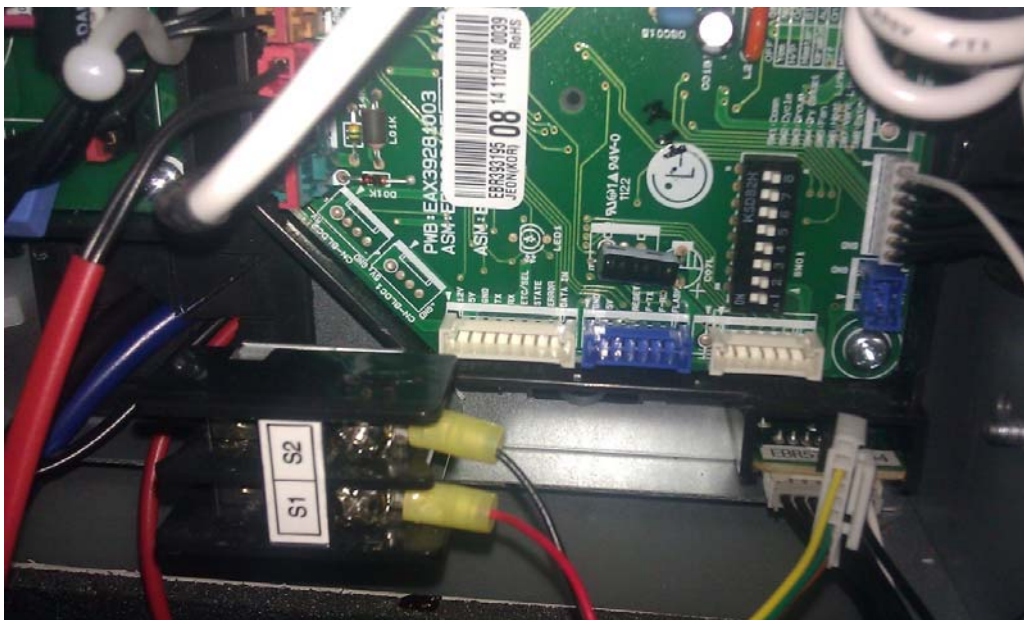


13601 LG cable

4. Connect CN EXT on the Advantage Air supplied cable to connector CN EXT



If your unit has S1/S2, disconnect the existing connector in CN EXT, and connect CN EXT from Advantage Air cable



Notes:

The LG unit does not respond to MyAir or Zone10.4 controls for the first 2 minutes after the LG unit is powered.